

# 2024 PRODUCT CATALOG

**TRUCK & BUS RADIAL (TBR) TIRES  
NORTH AMERICA**





# A BRIEF RIDE THROUGH HISTORY

After a decade of promising growth, Armstrong purchases a small tire manufacturing plant in New Haven, Connecticut.

1912 ←

A tire dealer in New Jersey by the name of George F. Armstrong entered the tube & pneumatic tire industry in a tiny loft.

→ 1922

1961 ←

Armstrong became the fifth-largest tire maker in the world and ranked amongst the Fortune 500 companies.

Armstrong introduced the first bias-belted fiberglass tire, one of many inventions.

→ 1965

1970 ←

The Armstrong Rubber Company moved into its \$7 million headquarters designed by renowned architect Michael Brauer in New Haven, Connecticut.

Armstrong achieved a record sales volume worth \$1 billion.

→ 1986

1988 ←

Armstrong was acquired by Pirelli S.p.A, becoming Pirelli Armstrong Tire Corporation.

Pirelli phased out the Armstrong brand in the latter half of the 1990s.

→ 1990

2012 ←

ZAFCO acquires the Armstrong brand from Pirelli with the goal of rebuilding it from the ground up.

Newly reengineered, the Armstrong brand returned to the tire industry, continuing the Armstrong legacy of making premium products by quality-minded people.

→ 2015



# ABOUT US

**Over the past five years**, we've been steadily working to bring back one of the most reliable and trusted American tire brands - and modernizing it into a premium ZAFCO product offering.

Armstrong Tires is now part of the ZAFCO family of brands, and our dedication to quality, value, and safety turned out to be a perfect fit for the continuation of the Armstrong legacy.

Every Armstrong tire you buy is backed by an uncompromising level of integrity and service that has been ZAFCO's signature for the past 25 years.

We're proud of the legacy that we've built over the last quarter century, and we look forward to growing the Armstrong brand with the help of key partners in the tire industry.





# WHY ARMSTRONG?

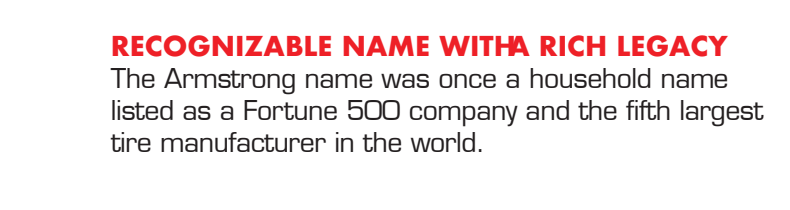
## VALUE-DRIVEN PRICING PROGRAM

Our unique pricing program is designed to provide the highest value at the lowest possible cost and grow your profit margins.



## EPA SMARTWAY VERIFIED

Along with ongoing US EPA Smartway certification, Armstrong tires are engineered for low rolling resistance, delivering extra mileage and leading to fuel-efficiency and reduced CO2 emissions.



## RECOGNIZABLE NAME WITH A RICH LEGACY

The Armstrong name was once a household name listed as a Fortune 500 company and the fifth largest tire manufacturer in the world.



## SOPHISTICATED SAFETY MEASURES

Each tire is x-ray inspected and subjected to thorough testing for performance, durability and safety before leaving our factory floor.



## CASING INTEGRITY

The remarkable casing integrity of Armstrong tires enable them to withstand more retreads over time, increasing lifespan, and ultimately reducing disposal in landfills.



## A STELLAR SUITE OF SELL-OUT SUPPORT

Armstrong dealers receive sell-out support including training resources, marketing programs, and access to our Dealer Portal so you have all the sales tools you need at your fingertips.

# THE BUILT TO LAST WARRANTY

TUFF HAUL

**TIRES THAT ARE NOT ONLY BUILT TO LAST, BUT ACTUALLY GUARANTEED TO.**

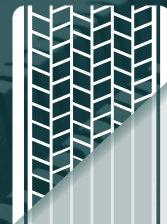
Our industry-leading warranty includes free replacement of a tire that becomes unserviceable within the first 12 months and prorated replacement within 7 years of its manufacture, reimbursement for the cost of mounting and balancing up to \$16.00 per tire, and a casing warranty through 2 retreads.



FREE REPLACEMENT  
12MO / 2/32NDS



7-YEAR  
WARRANTY  
PERIOD



CASING  
WARRANTY 'TIL  
2 RETREADS

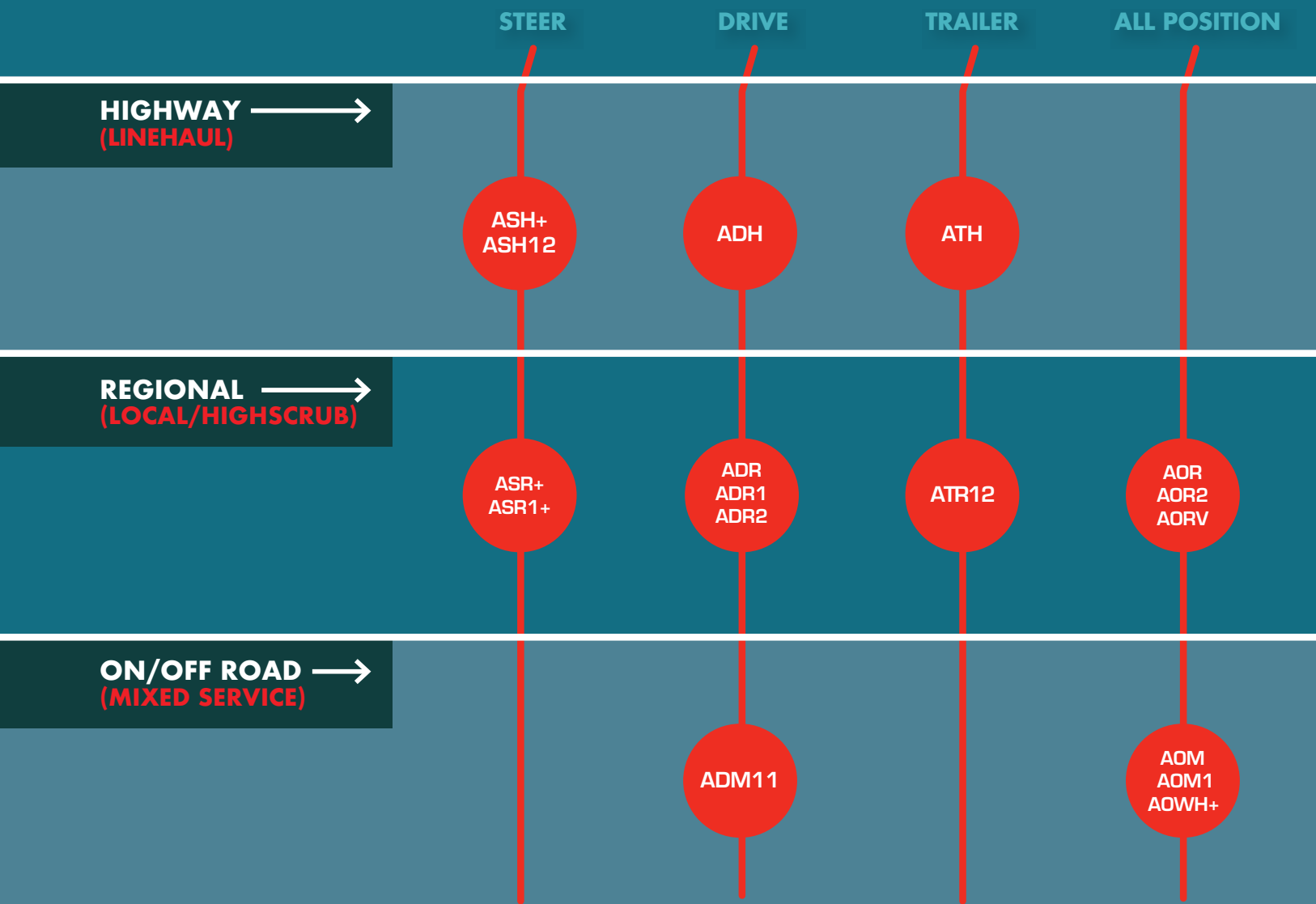
## CASING ALLOWANCE

1ST RETREAD: \$100 2ND RETREAD: \$75	1ST RETREAD: \$40 2ND RETREAD: \$25
11R22.5	215/75R17.5
11R24.5	235/75R17.5
12R24.5	225/70R19.5
295/75R22.5	245/70R19.5
285/75R24.5	265/70R19.5
315/80R22.5	245/75R22.5
385/65R22.5	265/75R22.5
425/65R22.5	255/70R22.5
	275/70R22.5

For warranty coverage details, please visit [armstrongtire.com/commercial/warranty](http://armstrongtire.com/commercial/warranty)



# TIRE LINE-UP



# TIRE PATTERN NAME GUIDE

EXAMPLE



A



**Armstrong**  
(BRAND)

D



**Drive**  
(POSITION)

H



**Highway**  
(APPLICATION)

LETTER

DEFINITION

TYPE

A

Armstrong

Brand

D

Drive

Position

S

Steer

Position

T

Trailer

Position

O

Omni (All Position)

Position

R

Regional

Application

H

Highway

Application

M

Mixed Service

Application

WH

Waste Hauler

Application

RV

Recreational Vehicle

Application

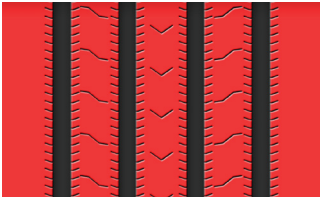


# ASH+

EPA  
SMARTWAY®  
VERIFIED

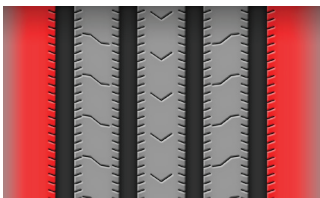


**A premium steer axle tire for long-haul applications** with unique tread design for excellent road grip and wet traction and siping to ensure sharp steering and noise reduction. Decoupling grooves and wider shoulder ribs also help minimize irregular wear.



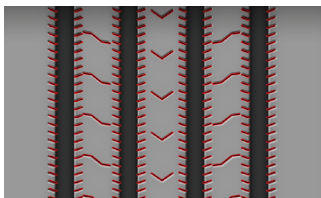
### EXCELLENT GRIP AND TRACTION.

Unique tread design offers excellent road grip and traction in wet conditions.



### RESISTANCE AGAINST IRREGULAR WEAR.

De-coupling grooves and wider shoulder ribs help minimize irregular wear.

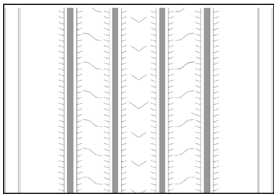


### NOISE REDUCTION.

Siping on the tread ensures sharp steering and reduction in noise.

PRODUCT CODE	TIRE SIZE	SERVICE DESCRIPTION	LOAD RANGE / PLY RATING	RIM WIDTH	MAX. LOAD (SINGLE)	MAX. LOAD (DUAL)	INFLATION PRESSURE	OVERALL DIAMETER	SECTION WIDTH	MINIMUM DUAL SPACING	TREAD DEPTH	STATIC LOADED RADIUS	MAX SPEED	REVS PER MILE
				inches	lbs	lbs	psi	inches	inches	inches	32nds	inches	mph	
1200043970	11R22.5	146/143M	H/16	8.25	6615	6010	125	41.3	11.0	12.5	18	19.3	81	504
1200045790	295/75R22.5	148/145L	H/16	9.00	6945	6395	125	40.3	11.4	13.2	18	18.8	75	517
1200043974	11R24.5	149/146M	H/16	8.25	7165	6615	120	43.4	11.2	12.5	18	20.2	81	482
1200043971	285/75R24.5	144/141L	G/14	8.25	6175	5675	110	41.4	11.0	12.5	18	19.4	75	503

Casing Size	Regrooving Guidelines		Retreading Recommendations	
	Depth (32nds)	Width (32nds)	Buffing radius	Tread width (mm)
11R22.5	3	9 - 10	700 mm or 27.5 inches	230
295/75R22.5	3	9 - 10	850 mm or 33.4 inches	230
11R24.5	3	9 - 10	700 mm or 27.5 inches	230
285/75R24.5	3	9 - 10	850 mm or 33.4 inches	230



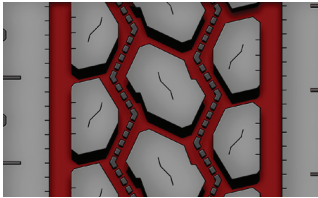


# ADH /

EPA  
SMARTWAY®  
VERIFIED



**A premium drive axle tire for long-haul applications** offering a deeper tread for increased mileage, closed and solid shoulder ribs for resistance against uneven wear, and optimized block design to protect against stone retention.



#### INCREASED LIFESPAN.

Deeper tread increases the tire life considerably in high torque applications.



#### RESISTANCE AGAINST IRREGULAR WEAR.

Closed and solid shoulder ribs offer excellent resistance against irregular wear.

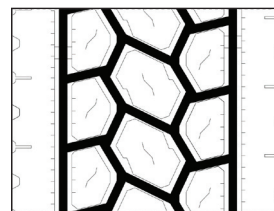


#### PREVENTS STONE RETENTION.

Optimized block design and stone ejectors prevent retention of stones.

PRODUCT CODE	TIRE SIZE	SERVICE DESCRIPTION	LOAD RANGE / PLY RATING	RIM WIDTH	MAX. LOAD (SINGLE)	MAX. LOAD (DUAL)	INFLATION PRESSURE	OVERALL DIAMETER	SECTION WIDTH	MINIMUM DUAL SPACING	TREAD DEPTH	STATIC LOADED RADIUS	MAX SPEED	REVS PER MILE
				inches	lbs	lbs	psi	inches	inches	inches	32nds	inches	mph	
1200033731	11R22.5	148/145L	H/16	8.25	6945	6395	125	42.0	11.2	12.5	29	19.6	75	497
1200033733	295/75R22.5	144/141L	G/14	9.00	6175	5675	110	40.9	11.5	11.6	29	19.2	75	509
1200036856	11R24.5	149/146L	H/16	8.25	7165	6615	120	44.3	11.2	12.5	29	20.7	75	471
1200036099	285/75R24.5	144/141L	G/14	8.25	6175	5675	110	42.3	11.1	12.5	29	19.9	75	491

Casing Size	Regrooving Guidelines		Retreading Recommendations	
	Depth (32nds)	Width (32nds)	Buffing radius	Tread width (mm)
11R22.5	3	7 - 9	700 mm or 27.5 inches	235
295/75R22.5	3	7 - 9	850 mm or 33.4 inches	235
11R24.5	3	7 - 9	700 mm or 27.5 inches	235
285/75R24.5	3	7 - 9	850 mm or 33.4 inches	240







# ATH

EPA  
SMARTWAY®  
VERIFIED



**A premium trailer tire for long haul applications** with uniquely designed shoulder grooves that provide resistance to uneven shoulder wear, shallow tread to reduce rolling resistance and heat buildup, and circumferential grooves for exceptional handling in wet conditions.



### LOW ROLLING RESISTANCE.

Shallow tread significantly reduces rolling resistance and offers good resistance to heat buildup and scrubbing.



### EVEN SHOULDER WEAR.

Uniquely designed shoulder grooves provide outstanding resistance to uneven shoulder wear.

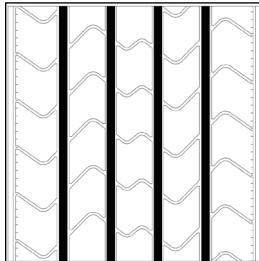


### EXCEPTIONAL WET HANDLING.

Four circumferential grooves evacuate water quickly and deliver exceptional handling.

PRODUCT CODE	TIRE SIZE	SERVICE DESCRIPTION	LOAD RANGE / PLY RATING	RIM WIDTH	MAX. LOAD (SINGLE)	MAX. LOAD (DUAL)	INFLATION PRESSURE	OVERALL DIAMETER	SECTION WIDTH	MINIMUM DUAL SPACING	TREAD DEPTH	STATIC LOADED RADIUS	MAX SPEED	REVS PER MILE
				inches	lbs	lbs	psi	inches	inches	inches	32nds	inches	mph	
1200036053	11R22.5	148/145L	H/16	8.25	6945	6395	125	40.9	11.1	12.5	13	19.2	75	508
1200033754	295/75R22.5	144/141L	G/14	9.00	6175	5675	110	39.9	11.3	13.2	13	18.6	75	523
1200036859	11R24.5	149/146M	H/16	8.25	7165	6615	120	43.0	11.3	12.5	13	20.1	81	484
1200036054	285/75R24.5	144/141L	G/14	8.25	6175	5675	110	41.0	10.9	12.5	13	19.3	75	507

Casing Size	Regrooving Guidelines		Retreading Recommendations	
	Depth (32nds)	Width (32nds)	Buffing radius	Tread width (mm)
11R22.5	3	9 - 10	700 mm or 27.5 inches	220
295/75R22.5	3	9 - 10	850 mm or 33.4 inches	220
11R24.5	3	9 - 10	700 mm or 27.5 inches	220
285/75R24.5	3	9 - 10	850 mm or 33.4 inches	220



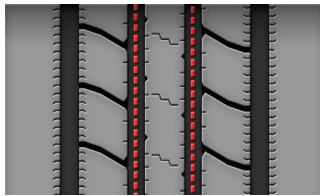


# ASR+ /

EPA  
SMARTWAY®  
VERIFIED



**A steer axle tire designed exclusively for pickup and delivery applications** with solid shoulders to help even wear while providing precise steering and maneuvering ability, optimized siping on inner ribs to improve handling and traction, and groove bottom protectors to prevent stone drilling and retention.



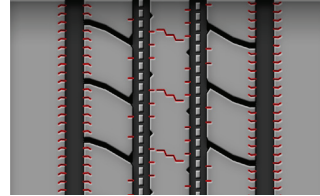
### PREVENTS STONE RETENTION.

Groove bottom protectors prevent stone drilling and retention.



### EVEN SHOULDER WEAR.

Solid shoulders help even wear while delivering precise steering and maneuvering ability.



### EXCELLENT TRACTION.

Optimized siping on inner ribs improves handling and yields excellent traction.

PRODUCT CODE	TIRE SIZE	SERVICE DESCRIPTION	LOAD RANGE / PLY RATING	RIM WIDTH	MAX. LOAD (SINGLE)	MAX. LOAD (DUAL)	INFLATION PRESSURE	OVERALL DIAMETER	SECTION WIDTH	MINIMUM DUAL SPACING	TREAD DEPTH	STATIC LOADED RADIUS	MAX SPEED	REVS PER MILE
				inches	lbs	lbs	psi	inches	inches	inches	32nds	inches	mph	
1200044472	225/70R19.5*	128/126L	G/14	6.00	3970	3750	110	32.0	8.6	10.0	16	15.0	75	651
1200044473	245/70R19.5*	136/134L	H/16	6.75	4940	4675	120	33.1	9.7	11.0	16	15.4	75	631
1200044474	265/70R19.5*	140/138L	G/14	7.50	5510	5205	110	34.1	10.3	11.6	17	15.8	75	614
1200055152	265/70R19.5	143/141L	J/18	7.50	6010	5675	110	34.1	10.3	11.6	17	15.8	75	614
1200044468	11R22.5	146/143M	H/16	8.25	6615	6010	120	41.5	11.0	12.5	19	19.3	81	504
1200044466	255/70R22.5	140/137L	H/16	7.50	5510	5070	120	36.8	10.0	11.3	15	17.1	75	568
1200046277	275/70R22.5	148/145L	J/18	8.25	6945	6395	130	37.9	11.0	12.0	19	17.6	75	552
1200045789	295/75R22.5	149/146L	H/16	9.00	7165	6615	110	40.4	11.3	13.2	20	18.8	75	517
1200044471	11R24.5	149/146M	H/16	8.25	7165	6615	120	43.5	11.3	12.5	20	20.3	81	480
1200044469	285/75R24.5	144/141L	G/14	8.25	6175	5675	110	41.6	11.1	12.5	20	19.5	75	501

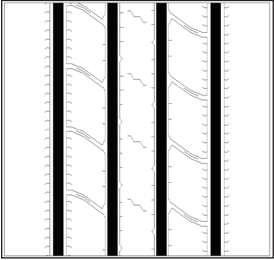
\*SUITABLE FOR RV



# ASR+ /

EPA  
SMARTWAY®  
VERIFIED

Casing Size	Regrooving Guidelines		Retreading Recommendations	
	Depth (32nds)	Width (32nds)	Buffing radius	Tread width (mm)
225/70R19.5	3	9 - 10	750 mm or 29.5 inches	180
245/70R19.5	3	9 - 10	750 mm or 29.5 inches	215
265/70R19.5	3	9 - 10	800 mm or 31.5 inches	220
11R22.5	3	9 - 10	700 mm or 27.5 inches	220
255/70R22.5	3	9 - 10	800 mm or 31.5 inches	210
275/70R22.5	3	9 - 10	850 mm or 33.4 inches	240
295/75R22.5	3	9 - 10	850 mm or 33.4 inches	220
11R24.5	3	9 - 10	700 mm or 27.5 inches	220
285/75R24.5	3	9 - 10	850 mm or 33.4 inches	220





# ADR /

EPA  
SMARTWAY®  
VERIFIED



**A drive axle tire designed for regional service applications** with the ability to withstand high load conditions, excellent traction in wet conditions, deeper and wider original tread for longer tire life, and optimized block shape and unique tread design to prevent irregular wear and stone retention.



### EXCELLENT WET TRACTION.

Open shoulder design offers excellent traction in wet conditions.



### RESISTANCE AGAINST IRREGULAR WEAR.

Optimized block shape and unique tread design prevent irregular wear and stone retention.

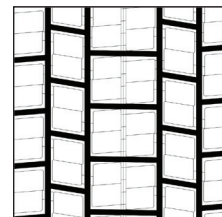


### PROLONGED LIFE SPAN.

Deeper original tread depth and wider tread delivers longer tire life.

PRODUCT CODE	TIRE SIZE	SERVICE DESCRIPTION	LOAD RANGE / PLY RATING	RIM WIDTH	MAX. LOAD (SINGLE)	MAX. LOAD (DUAL)	INFLATION PRESSURE	OVERALL DIAMETER	SECTION WIDTH	MINIMUM DUAL SPACING	TREAD DEPTH	STATIC LOADED RADIUS	MAX SPEED	REVS PER MILE
				inches	lbs	lbs	psi	inches	inches	inches	32nds	inches	mph	
1200042173	11R22.5	148/145L	H/16	8.25	6945	6395	125	41.8	11.0	12.5	24	19.5	75	499
1200033755	295/75R22.5	144/141L	G/14	9.00	6175	5675	110	41.9	11.3	13.2	27	19.3	75	501
1200042628	11R24.5	149/146L	H/16	8.25	7165	6615	120	43.1	11.2	12.5	25	20.1	75	484
1200042174	285/75R24.5	144/141L	G/14	8.25	6175	5675	110	40.8	11.3	12.5	25	19.1	75	511

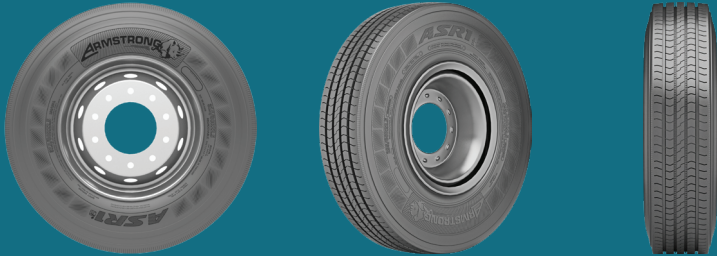
Casing Size	Regrooving Guidelines		Retreading Recommendations	
	Depth (32nds)	Width (32nds)	Buffing radius	Tread width (mm)
11R22.5	3	9 - 10	700 mm or 27.5 inches	230
295/75R22.5	3	9 - 10	850 mm or 33.4 inches	235
11R24.5	3	9 - 10	700 mm or 27.5 inches	235
285/75R24.5	3	9 - 10	850 mm or 33.4 inches	240



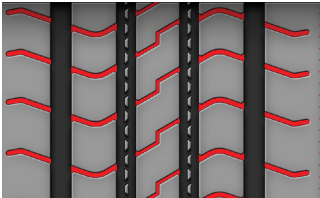




# ASR1+ /

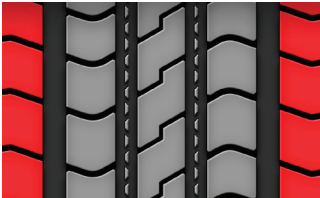


**A steer axle tire exclusively designed with All Position capability for regional applications** with square shoulders to combat irregular wear, enhance cornering, and deliver long mileage, remarkable road grip in both dry and wet conditions, and a special tread compound that provides extraordinary resistance against abrasion.



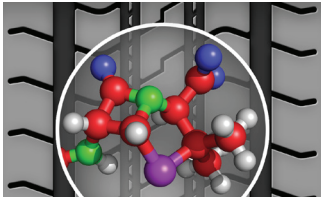
**EXCELLENT ROAD GRIP.**

Siping on the tread offers remarkable road grip in both dry and wet conditions.



**ENHANCED CORNERING AND LONG MILEAGE.**

Square shoulders combat irregular wear, enhancing cornering, and delivering long mileage.



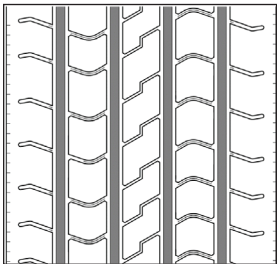
**EXTRAORDINARY RESISTANCE.**

A special tread compound offers extraordinary resistance against abrasion.

PRODUCT CODE	TIRE SIZE	SERVICE DESCRIPTION	LOAD RANGE / PLY RATING	RIM WIDTH	MAX. LOAD (SINGLE)	MAX. LOAD (DUAL)	INFLATION PRESSURE	OVERALL DIAMETER	SECTION WIDTH	MINIMUM DUAL SPACING	TREAD DEPTH	STATIC LOADED RADIUS	MAX SPEED	REVS PER MILE
				inches	lbs	lbs	psi	inches	inches	inches	32nds	inches	mph	
1200044625	12R22.5*	152/148M	H/16	9.00	7825	6945	125	42.9	11.9	13.5	20	20.1	81	485
1200044626	295/80R22.5*	152/148M	H/16	9.00	7825	6945	125	41.3	11.6	13.2	20	19.4	81	504
1200044627	315/80R22.5*	156/150L	L/20	9.00	8820	7385	125	42.7	12.2	13.8	20	19.8	75	490

\*SUITABLE FOR RV

Casing Size	Regrooving Guidelines		Retreading Recommendations	
	Depth (32nds)	Width (32nds)	Buffing radius	Tread width (mm)
12R22.5	3	7 - 9	700 mm or 27.5 inches	230
295/80R22.5	3	7 - 9	700 mm or 27.5 inches	240
315/80R22.5	3	7 - 9	800 mm or 31.5 inches	260





# ADR1 /



**A drive axle tire for regional applications** with an open shoulder design that provides quicker water evacuation and superior road grip, deeper grooves for better traction and prolonged tire life, and optimized block shape and unique tread design to prevent irregular wear and stone retention.



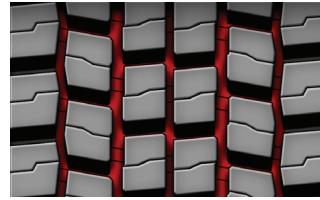
### QUICK WATER EVACUATION.

An open shoulder design provides quicker water evacuation which results in superior road grip.



### RESISTANCE AGAINST IRREGULAR WEAR.

Optimized block shape and unique tread design prevent irregular wear and stone retention.

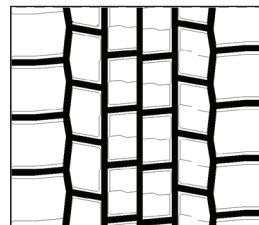


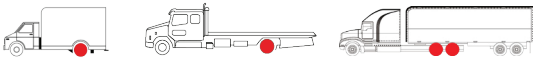
### PROLONGED LIFESPAN.

Deeper grooves ensure better traction and prolonged tire life.

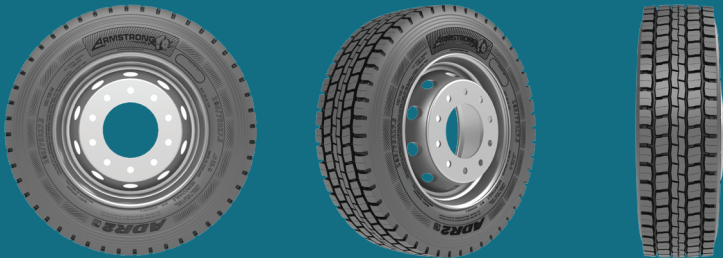
PRODUCT CODE	TIRE SIZE	SERVICE DESCRIPTION	LOAD RANGE / PLY RATING	RIM WIDTH	MAX. LOAD (SINGLE)	MAX. LOAD (DUAL)	INFLATION PRESSURE	OVERALL DIAMETER	SECTION WIDTH	MINIMUM DUAL SPACING	TREAD DEPTH	STATIC LOADED RADIUS	MAX SPEED	REVS PER MILE
				inches	lbs	lbs	psi	inches	inches	inches	32nds	inches	mph	
1200040682	225/70R19.5	128/126L	G/14	6.00	3970	3750	110	32.3	8.9	10.0	19	15.0	75	647
1200040684	245/70R19.5	136/134L	H/16	6.75	4940	4675	120	33.3	9.7	11.0	19	14.1	75	656
1200035701	12R22.5	152/148M	H/16	9.00	7825	6945	125	43.3	11.9	13.5	28	20.7	81	477
1200035703	295/80R22.5	152/148M	H/16	9.00	7825	6945	125	42.0	11.6	13.2	28	19.7	81	495
1200035765	315/80R22.5	156/150L	L/20	9.00	8820	7385	125	43.1	12.2	13.8	28	19.9	75	486

Casing Size	Regrooving Guidelines		Retreading Recommendations	
	Depth (32nds)	Width (32nds)	Buffing radius	Tread width (mm)
225/70R19.5	3	7 - 9	750 mm or 29.5 inches	180
245/70R19.5	3	7 - 9	750 mm or 29.5 inches	220
12R22.5	3	7 - 9	700 mm or 27.5 inches	240
295/80R22.5	3	7 - 9	700 mm or 27.5 inches	250
315/80R22.5	3	7 - 9	800 mm or 31.5 inches	250

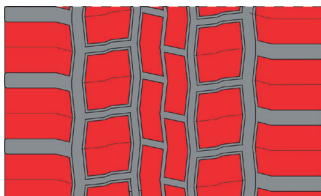




# ADR2 /

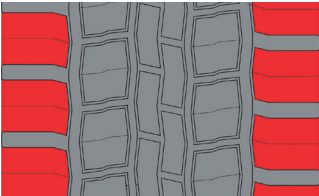


A drive axle tire for regional applications with a unique five-lug pattern that provides a firm grip and cornering ability, a uniform tread block designed to bear loads evenly, and deeper and wider grooves for increased mileage and enhanced service life



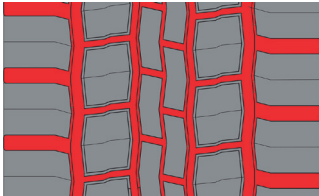
**A UNIQUE FIVE-LUG PATTERN.**

A unique five-lug pattern designed to offer firm grip and cornering ability.



**AN OPEN SHOULDER DESIGN.**

An open shoulder design that ensures quicker evacuation of water and delivers strong road grip.

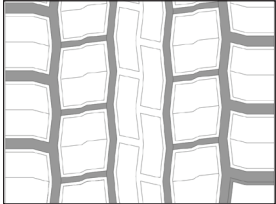


**DEEPER AND WIDER GROOVES.**

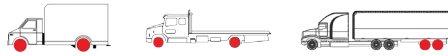
Deeper and wider grooves increase mileage and enhance service life.

PRODUCT CODE	TIRE SIZE	SERVICE DESCRIPTION	LOAD RANGE / PLY RATING	RIM WIDTH	MAX. LOAD (SINGLE)	MAX. LOAD (DUAL)	INFLATION PRESSURE	OVERALL DIAMETER	SECTION WIDTH	MINIMUM DUAL SPACING	TREAD DEPTH	STATIC LOADED RADIUS	MAX SPEED	REVS PER MILE
				inches	lbs	lbs	psi	inches	inches	inches	32nds	inches	mph	
1200042179	215/75R17.5	126/124L	G/14	6.00	3750	3525	120	30.4	8.3	9.4	16	14.1	75	689
1200042183	235/75R17.5	143/141J	J/18	6.75	6010	5675	125	31.5	9.3	10.3	16	14.4	62	669

Casing Size	Regrooving Guidelines		Retreading Recommendations	
	Depth [32nds]	Width [32nds]	Buffing radius	Tread width (mm)
215/75R17.5	3	9 - 10	550 mm or 21.6 inches	190
235/75R17.5	3	9 - 10	650 mm or 25.6 inches	205



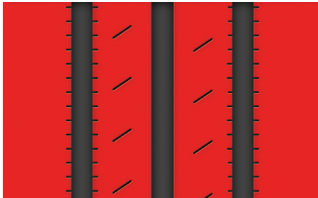




# AOR /

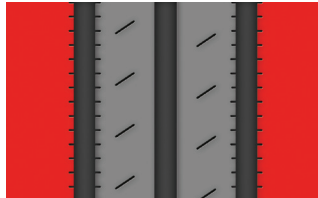


**An All Position radial for regional and limited long haul applications** with an optimized wider tread design to deliver longer mileage, enhanced contact patch area to reduce wear rate, shallow tread to reduce rolling resistance and resist heat buildup, and solid shoulder ribs to resist maneuvering scrub.



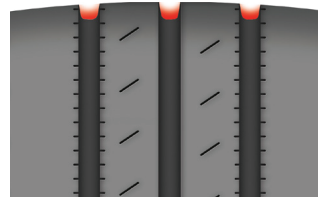
### INCREASED LONGEVITY.

An optimized wider tread design delivers longer mileage, while an enhanced contact patch area reduces wear rate.



### ENHANCED RESISTANCE TO MANEUVERING SCRUB.

Solid shoulder ribs help in resist maneuvering scrub.

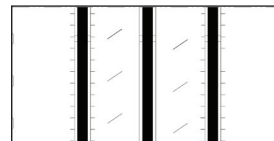


### REDUCED ROLLING RESISTANCE.

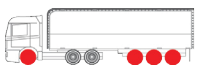
Shallow tread reduces rolling resistance while combating heat buildup and scrubbing in low platform trailer applications.

PRODUCT CODE	TIRE SIZE	SERVICE DESCRIPTION	LOAD RANGE / PLY RATING	RIM WIDTH	MAX. LOAD (SINGLE)	MAX. LOAD (DUAL)	INFLATION PRESSURE	OVERALL DIAMETER	SECTION WIDTH	MINIMUM DUAL SPACING	TREAD DEPTH	STATIC LOADED RADIUS	MAX SPEED	REVS PER MILE
				inches	lbs	lbs	psi	inches	inches	inches	32nds	inches	mph	
1200039215	215/75R17.5	135/133J	J/18	6.00	4805	4540	120	30.3	8.3	9.4	13	14.0	62	692

Casing Size	Regrooving Guidelines		Retreading Recommendations	
	Depth [32nds]	Width [32nds]	Buffing radius	Tread width (mm)
215/75R17.5	3	7 - 9	550 mm or 21.6 inches	190



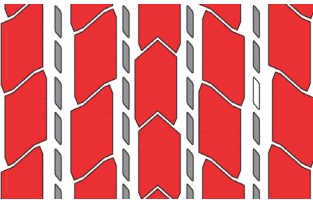




# AOR2 /

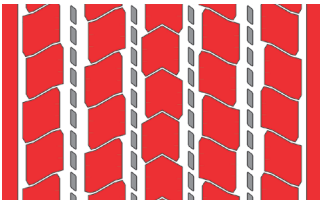


**An All Position tire for long-haul and regional applications** with a five-rib pattern to maximize surface contact and bear load evenly, and a wider, unique tread pattern to prevent irregular wear and enhance tire life. Center rib sipes enhance braking and steering in wet conditions, and stone ejectors on every groove ensure better traction and grip.



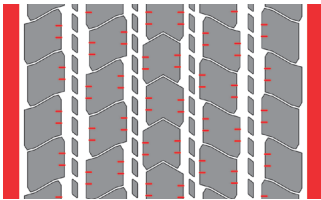
**A FIVE-RIB PATTERN.**

A five-rib pattern that maximizes surface contact and bears load evenly.



**A WIDER, UNIQUE TREAD PATTERN.**

A wider, unique pattern prevents irregular wear and enhances tire life.

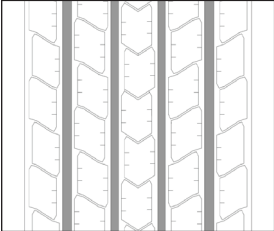


**A UNIQUE SHOULDER DESIGN.**

A unique shoulder design and sipes on center ribs offer enhanced braking and steering in wet conditions.

PRODUCT CODE	TIRE SIZE	SERVICE DESCRIPTION	LOAD RANGE / PLY RATING	RIM WIDTH	MAX. LOAD (SINGLE)	MAX. LOAD (DUAL)	INFLATION PRESSURE	OVERALL DIAMETER	SECTION WIDTH	MINIMUM DUAL SPACING	TREAD DEPTH	STATIC LOADED RADIUS	MAX SPEED	REVS PER MILE
				inches	lbs	lbs	psi	inches	inches	inches	32nds	inches	mph	
1200042177	215/75R17.5	126/124L	G/14	6.00	3750	3525	100	30.3	8.3	9.4	15	14.1	75	690
1200042178	215/75R17.5	135/133J	J/18	6.00	4805	4540	120	30.3	8.3	9.4	15	14.1	62	690
1200042181	235/75R17.5	143/141J	J/18	6.75	6010	5675	125	31.5	9.3	10.3	16	14.3	62	671

Casing Size	Regrooving Guidelines		Retreading Recommendations	
	Depth (32nds)	Width (32nds)	Buffing radius	Tread width (mm)
215/75R17.5	3	9 - 10	550 mm or 21.6 inches	180
235/75R17.5	3	9 - 10	650 mm or 25.6 inches	200

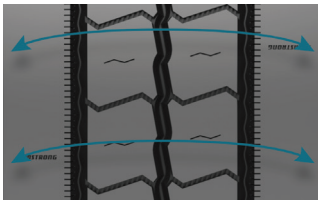




# ATR12 /

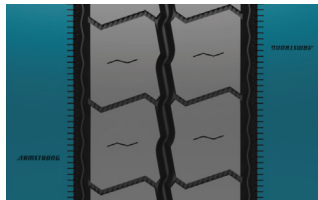


**Next generation trailer tire for regional applications** designed with a wide tread to reduce irregular wear, a tread compound to offer better fuel efficiency, solid shoulder ribs that improve wet braking, and innovative circumferential grooves for quicker water evacuation.



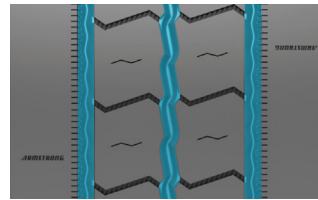
## WIDE TREAD WITH INCREASED TREAD CONTACT AREA

helps reduce irregular wear.



## SOLID SHOULDER RIBS

enable efficient braking on dry & wet surfaces.

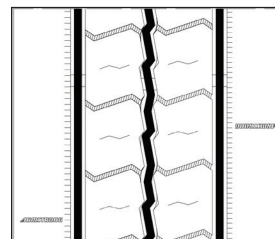


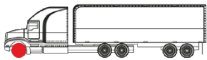
## INNOVATIVE CIRCUMFERENTIAL GROOVE

design offers quicker water evacuation while improving trailer stability.

PRODUCT CODE	TIRE SIZE	SERVICE DESCRIPTION	LOAD RANGE / PLY RATING	RIM WIDTH	MAX. LOAD (SINGLE)	MAX. LOAD (DUAL)	INFLATION PRESSURE	OVERALL DIAMETER	SECTION WIDTH	MINIMUM DUAL SPACING	TREAD DEPTH	STATIC LOADED RADIUS	MAX SPEED	REVS PER MILE
				inches	lbs	lbs	psi	inches	inches	inches	32nds	inches	mph	
1200052738	215/75R17.5	135/133J	H/16	6.00	4805	4540	125	30.2	8.3	9.4	15	14.0	62	694
1200052739	235/75R17.5	143/141J	J/18	6.75	6010	5675	125	31.3	9.1	10.3	15	14.3	62	673
1200056268	265/70R19.5	143/141J	J/18	7.50	6010	5675	125	34.0	10.3	11.6	15	15.9	62	613

Casing Size	Regrooving Guidelines		Retreading Recommendations	
	Depth (32nds)	Width (32nds)	Buffing radius	Tread width (mm)
215/75R17.5	3	5 - 6	550 mm or 21.6 inches	180
235/75R17.5	3	5 - 6	650 mm or 25.6 inches	205
265/70R19.5	3	5 - 6	800 mm or 31.5 inches	220

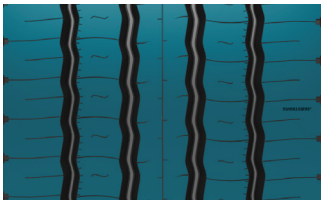




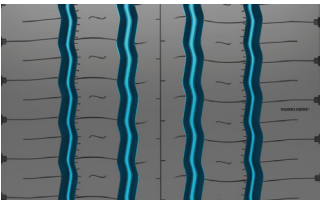
# ASH12 /



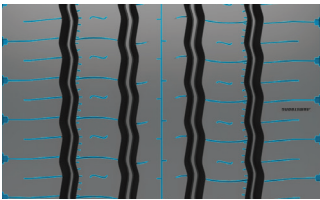
**Next generation steer pattern designed for long-haul and regional applications** features strong shoulder ribs and a five-rib tread for exceptional steering, zigzag grooves for quicker water evacuation, specially designed sipes to resist irregular wear, and an innovative tread compound that increases mileage while reducing fuel consumption.



**STRONG SHOULDER RIBS.**  
And a five-rib tread pattern designed for exceptional steering, while a pyramid-base rib design offers reduced rolling resistance that evolves with wear.



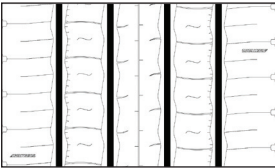
**FOUR WIDE ZIGZAG GROOVES.**  
Specially designed to ensure quicker water evacuation and avoid stone trap and casing damage.



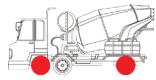
**SPECIALLY DESIGNED SIPES.**  
reduce braking distance and increase resistance against irregular wear.

PRODUCT CODE	TIRE SIZE	SERVICE DESCRIPTION	LOAD RANGE / PLY RATING	RIM WIDTH	MAX. LOAD (SINGLE)	MAX. LOAD (DUAL)	INFLATION PRESSURE	OVERALL DIAMETER	SECTION WIDTH	MINIMUM DUAL SPACING	TREAD DEPTH	STATIC LOADED RADIUS	MAX SPEED	REVS PER MILE
				inches	lbs	lbs	psi	inches	inches	inches	32nds	inches	mph	
1200052732	385/65R22.5	160K	L/20	11.75	9920	-	130	42.2	15.2	-	20	19.6	68	495
1200052733	385/65R22.5	164K	N/24	11.75	11025	-	130	42.2	15.2	-	20	19.4	68	498

Casing Size	Regrooving Guidelines		Retreading Recommendations	
	Depth (32nds)	Width (32nds)	Buffing radius	Tread width (mm)
385/65R22.5	3	9 - 10	1000 mm or 39.3 inches	315







# AOM /

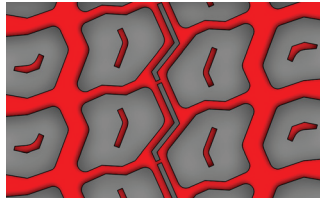


**A wide base All Position tire for mixed service applications** with a rugged tread design to improve flotation and traction in soft soil and mud, a cut and chip compound that resists off-road abuse, wider circumferential grooves to enhance wet traction, and large lugs to help withstand overloads.



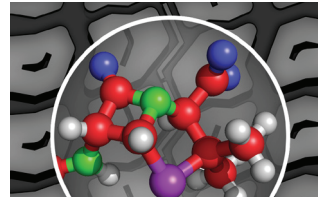
### IMPROVED FLOTATION AND TRACTION.

A rugged and aggressive tread design improves flotation and traction in soft soil and mud.



### ENHANCED WET TRACTION AND LOAD RANGE.

Wider circumferential grooves enhance wet traction while large lugs help withstand overloads.

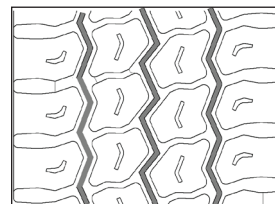


### PROTECTION AGAINST OFF-ROAD ABUSE.

A cut and chip resistance compound resists off road abuse.

PRODUCT CODE	TIRE SIZE	SERVICE DESCRIPTION	LOAD RANGE / PLY RATING	RIM WIDTH	MAX. LOAD (SINGLE)	MAX. LOAD (DUAL)	INFLATION PRESSURE	OVERALL DIAMETER	SECTION WIDTH	MINIMUM DUAL SPACING	TREAD DEPTH	STATIC LOADED RADIUS	MAX SPEED	REVS PER MILE
				inches	lbs	lbs	psi	inches	inches	inches	32nds	inches	mph	
1200036860	385/65R22.5	160K	L/20	11.75	9920	-	130	42.4	15.2	-	22	19.7	68	493
1200040811	425/65R22.5	165K	L/20	13.00	11355	-	120	44.4	17.0	-	23	20.4	68	473

Casing Size	Regrooving Guidelines		Retreading Recommendations	
	Depth (32nds)	Width (32nds)	Buffing radius	Tread width (mm)
385/65R22.5	3	7 - 9	1200 mm or 47.2 inches	315
425/65R22.5	3	7 - 9	1300 mm or 51.2 inches	340





# AOM1 /



**An All Position radial for high scrub applications** with a special zigzag tread design that offers extraordinary resistance to cuts, chips, tearing, and irregular wear. A deeper tread design delivers exceptional traction and longer mileage, while wider circumferential grooves quickly evacuate mud and silt.



**RESISTANCE AGAINST  
IRREGULAR WEAR.**

A special zigzag tread design offers extraordinary resistance to cuts, chips, tearing, and irregular wear, making it ideal for high scrub urban applications.



**INCREASED LONGEVITY  
AND LONGER MILEAGE.**

A deeper tread design delivers exceptional traction and longer mileage, while wider circumferential grooves quickly evacuate mud and silt.

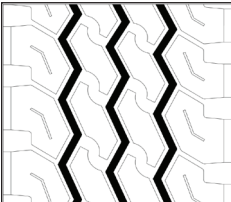


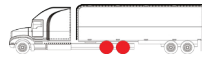
**ENHANCED TRACTION.**

Lugs on shoulders withstand impacts and enhance traction performance in both wet and dry conditions.

PRODUCT CODE	TIRE SIZE	SERVICE DESCRIPTION	LOAD RANGE / PLY RATING	RIM WIDTH	MAX. LOAD (SINGLE)	MAX. LOAD (DUAL)	INFLATION PRESSURE	OVERALL DIAMETER	SECTION WIDTH	MINIMUM DUAL SPACING	TREAD DEPTH	STATIC LOADED RADIUS	MAX SPEED	REVS PER MILE
				inches	lbs	lbs	psi	inches	inches	inches	32nds	inches	mph	
1200042176	11R22.5	148/145K	H/16	8.25	6945	6395	125	41.5	11.0	12.5	20	19.3	68	503
1200040950	315/80R22.5	160/157J	L/20	9.00	9920	9095	130	42.7	12.0	13.8	20	19.5	62	493
1200042630	11R24.5	149/146K	H/16	8.25	7165	6615	125	43.9	11.3	12.5	24	20.5	68	475
1200045735	12R24.5	152/149K	H/16	9.00	7825	7165	120	45.1	12.0	13.5	23	20.9	68	464

Casing Size	Regrooving Guidelines		Retreading Recommendations	
	Depth (32nds)	Width (32nds)	Buffing radius	Tread width (mm)
11R22.5	3	9 - 10	700 mm or 27.5 inches	220
315/80R22.5	3	9 - 10	800 mm or 31.5 inches	260
11R24.5	3	9 - 10	700 mm or 27.5 inches	220
12R24.5	3	9 - 10	1000 mm or 39.3 inches	250





# ADM11/

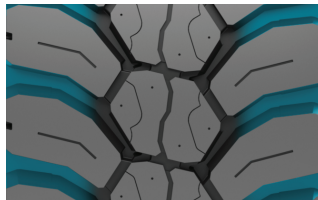


**Next generation drive tire designed for mixed applications** featuring a wide and deep tread for increased mileage, an open shoulder design to enable water and mud evacuation, variable-width grooves for enhanced retreadability, and an improved block profile to reduce wear and tear.



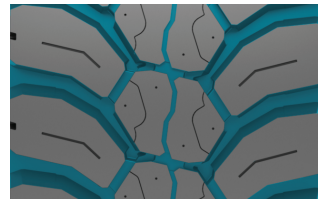
### WIDE AND DEEP TREAD.

Delivers longer mileage and extraordinary stability.



### OPEN SHOULDER DESIGN.

Enables quicker water and mud evacuation.

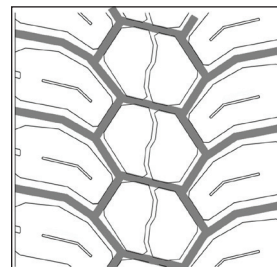


### VARIABLE-WIDTH GROOVES.

Lead to lower stone retention while protecting the casing for enhanced retreadability.

PRODUCT CODE	TIRE SIZE	SERVICE DESCRIPTION	LOAD RANGE / PLY RATING	RIM WIDTH	MAX. LOAD (SINGLE)	MAX. LOAD (DUAL)	INFLATION PRESSURE	OVERALL DIAMETER	SECTION WIDTH	MINIMUM DUAL SPACING	TREAD DEPTH	STATIC LOADED RADIUS	MAX SPEED	REVS PER MILE
				inches	lbs	lbs	psi	inches	inches	inches	32nds	inches	mph	
1200052731	315/80R22.5	156/150K	J/18	9.00	8820	7385	125	43.0	12.4	13.8	27	19.9	68	487

Casing Size	Regrooving Guidelines		Retreading Recommendations	
	Depth (32nds)	Width (32nds)	Buffing radius	Tread width (mm)
315/80R22.5	3	7 - 9	900 mm or 35.4 inches	260







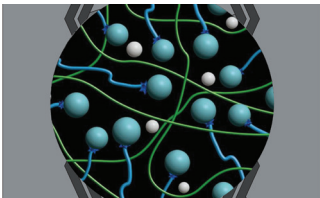
# AOWH+ /



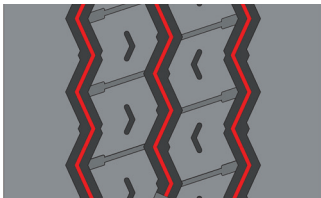
**An All Position tire designed exclusively for waste-haul trucks** with 10,000 pounds of single-load carrying capacity. Zigzag grooves and shoulder lugs offer better steering control in urban applications while increasing traction and the release of heat. Stone ejectors in all grooves protect the belts and improve retreadability.



**FOUR-RIB PATTERN.**  
A four-rib pattern maximizes tread volume rubber for longer mileage.



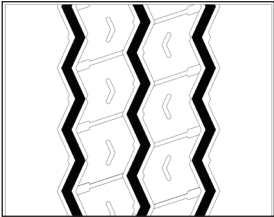
**OPTIMIZED TREAD COMPOUND.**  
An optimized tread compound offers cut and chip resistance, lower heat build-up, and longer mileage.

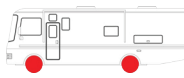


**STONE EJECTORS.**  
Stone ejectors in all grooves prevent damage from stones and road hazards, enhancing tire life.

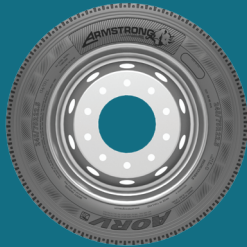
PRODUCT CODE	TIRE SIZE	SERVICE DESCRIPTION	LOAD RANGE / PLY RATING	RIM WIDTH	MAX. LOAD (SINGLE)	MAX. LOAD (DUAL)	INFLATION PRESSURE	OVERALL DIAMETER	SECTION WIDTH	MINIMUM DUAL SPACING	TREAD DEPTH	STATIC LOADED RADIUS	MAX SPEED	REVS PER MILE
1200054851	315/80R22.5	161/157K	L/20	9.00	10195	9095	130	42.9	12.5	13.8	23	19.7	68	490

Casing Size	Regrooving Guidelines		Retreading Recommendations	
	Depth (32nds)	Width (32nds)	Buffing radius	Tread width (mm)
315/80R22.5	3	7 - 9	800 mm or 31.5 inches	260

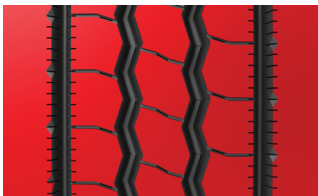




# AORV /

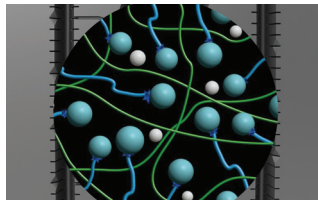


**An All Position tire designed for superior performance on recreational vehicles and motor homes** with a five-rib pattern to ensure good steering performance, a special tread compound for better rolling resistance, shoulder rib sipes to avoid uneven wear from the Poisson effect, and center groove stone ejectors.



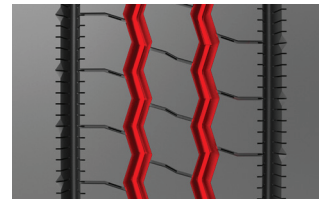
#### A FIVE-RIB PATTERN.

A five-rib pattern ensures good steering performance and safety.



#### A SPECIAL TREAD COMPOUND.

A special tread compound offers better rolling resistance and tire longevity.

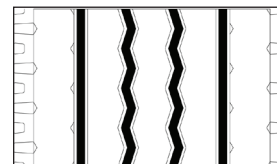


#### STONE EJECTORS IN CENTER GROOVES.

Stone ejectors in center grooves prevent damage from stones and road hazards, enhancing tire life.

PRODUCT CODE	TIRE SIZE	SERVICE DESCRIPTION	LOAD RANGE / PLY RATING	RIM WIDTH	MAX. LOAD (SINGLE)	MAX. LOAD (DUAL)	INFLATION PRESSURE	OVERALL DIAMETER	SECTION WIDTH	MINIMUM DUAL SPACING	TREAD DEPTH	STATIC LOADED RADIUS	MAX SPEED	REVS PER MILE
				inches	lbs	lbs	psi	inches	inches	inches	32nds	inches	mph	
1200044476	245/75R22.5	134/131L	G/14	7.50	4675	4300	110	37.1	9.8	10.98	19	17.5	75	560
1200044477	265/75R22.5	138/135L	G/14	7.50	5205	4805	110	38.3	10.5	11.6	19	18.0	75	543

Casing Size	Regrooving Guidelines		Retreading Recommendations	
	Depth (32nds)	Width (32nds)	Buffing radius	Tread width (mm)
245/75R22.5	3	5 - 6	750 mm or 29.5 inches	215
265/75R22.5	3	5 - 6	800 mm or 31.5 inches	220





# UPCOMING PATTERNS

PATTERN	TIRE SIZE	APPLICATION	POSITION
AOR4	11R22.5	Regional	Steer / All Position
AOR4	11R24.5	Regional	Steer / All Position
ADR4	11R22.5	Regional	Drive
ADR4	11R24.5	Regional	Drive
ASR5	275/80R22.5	Regional	Steer
ASR5	10R22.5	Regional	Steer
ADR5	275/80R22.5	Regional	Drive
ADR5	11R22.5	Regional	Drive
ADR5	11R24.5	Regional	Drive
ADR5	295/75R22.5	Regional	Drive
ADR5	285/75R24.5	Regional	Drive
ADR5	255/70R22.5	Regional	Drive





# TUFF HAUL WARRANTY PROGRAM

## WHO IS ELIGIBLE FOR WARRANTY COVERAGE?

You are covered by the terms of this Limited Warranty if you meet the following conditions:

1. You are the original owner, or the original owner's authorized agent, of new Armstrong truck tires bearing a prescribed DOT (Department of Transportation) tire identification number.
2. The size, load index, and speed rating is equivalent or greater than that specified by the vehicle manufacturer.
3. The tire was used only on the vehicle on which it was originally installed.
4. The tire was purchased on or after January 1, 2015 (proof of purchase required).

This warranty applies only to consumers actually purchasing and using the tires in all of North America, limited to the 48 contiguous states, the District of Columbia, the non-contiguous states of Hawaii and Alaska, and Canada.

## WHAT IS COVERED UNDER LIMITED WARRANTY AND FOR HOW LONG?

### A. FREE TIRE REPLACEMENT:

Under Armstrong's Limited Warranty conditions, any eligible tire that becomes unserviceable due to a covered warranty condition during the first 2/32" of treadwear, or within twelve (12) months from date of purchase (proof of purchase required), whichever comes first, will be replaced with a comparable Armstrong tire free of charge. In addition, Armstrong will reimburse the cost of mounting and balancing for up to a maximum of \$16.00 per tire. You will be responsible for any additional taxes or fees. The defective Armstrong tire must be replaced by an authorized Armstrong dealer only.

### B. PRO-RATED TIRE REPLACEMENT:

After the free replacement term expires, Armstrong's Limited Warranty covers any eligible tire that becomes unserviceable due to any reason within the manufacturer's control within seven (7) years from the date of manufacture, supplied directly from Armstrong and its authorized channels. Conditions of each claim are as follows:

1. Only damages that are due to defects in material and workmanship will be accepted.
2. Upon inspection, the final decision will be made by our representatives or persons authorized by us.
3. The amount to be compensated will be calculated on a prorated basis. You are responsible for mounting, balancing, or any other service charges, as well as any taxes and government-mandated charges.

## HOW WILL REPLACEMENT VALUE BE CALCULATED?

$$\text{Adjustment Percentage} = \frac{(\text{Remaining Tread Depth})}{(\text{Original Tread Depth})} \times 100$$

## WHAT IS NOT COVERED UNDER THE TUFF HAUL WARRANTY?

1. Tire damage due to:
  - a. Road hazards, including, but not limited to: cuts, punctures, snags, and bruises, or impact damages caused by potholes, curbs, spins, stone drills or other objects on the road.
  - b. Improper use or operation, including, but not limited to: over inflation, overloading, contamination or degradation by petroleum products or other chemicals, tire chain damage, use for racing or competitions, excessive off-road use, or willful damage or abuse.
  - c. Improper or insufficient maintenance, including, but not limited to: misalignment, wheel imbalance, defective brakes or shock absorbers, improper mounting or demounting, or other vehicle conditions.
2. Tires that are:
  - a. Used beyond the original tread life, i.e. the wear indicators are exposed.
  - b. Sold as "Defective Appearance" ("DA") Tires.
  - c. Branded "Blemished", or "Non-Adjustable."
  - d. Installed on any other vehicle other than the vehicle of original installation.
  - e. Acquired as used tires.
3. Ride disturbances that occur after the first 2/32" of treadwear.
4. Ozone or weather cracking on tires purchased over four (4) years from date of purchase. Proof of purchase is required. Without proof of purchase, date of manufacture will be used to determine eligibility.
5. Tire alteration of any manner, including, but not limited to: siping, buffing, stud pin holes, re-grooving, or additives.
6. Any other damage caused by user's actions or omissions not in conformity with vehicle manufacturer's specifications or instructions.



DISCLAIMER: ARMSTRONG TIRES DISCLAIMS ANY LIABILITY TO THE BUYER FOR ANY INDIRECT, SPECIAL, INCIDENTAL, CONSEQUENTIAL, LOST PROFIT, LOSS OF TIME, LOSS OF BUSINESS, LOSS OF GOODWILL OR REPUTATION, PUNITIVE OR OTHER DAMAGE, COST (INCLUDING FOR REPLACEMENT TRANSPORTATION), EXPENSE OR LOSS OF ANY KIND. SOME STATES DO NOT ALLOW THE EXCLUSION OR LIMITATION OF INCIDENTAL OR CONSEQUENTIAL DAMAGES, SO THE ABOVE LIMITATION OR EXCLUSION MAY NOT APPLY TO YOU.

## ARMSTRONG CASING ALLOWANCE

If an Armstrong TBR tire becomes unserviceable or unusable for any reason within the manufacturer's control and cannot be recapped within seven (7) years from the date of manufacture, or through two (2) retreads of service, whichever comes first, the following casing allowance will be applied:

1ST RETREAD: \$100 2ND RETREAD: \$75	1ST RETREAD: \$40 2ND RETREAD: \$25
11R22.5	215/75R17.5
11R24.5	235/75R17.5
12R24.5	225/70R19.5
295/75R22.5	245/70R19.5
285/75R24.5	265/70R19.5
315/80R22.5	245/75R22.5
385/65R22.5	265/75R22.5
425/65R22.5	255/70R22.5
	275/70R22.5

## EXCLUSIONS FOR CASING WARRANTY:

1. Casings that cannot be retreaded due to excessive tread wear.
2. Failures resulting from incorrect retread material or processing.

## HOW TO FILE A CLAIM

To claim an adjustment, you must first complete a 'Claim Adjustment Form' with the required details, which can be requested via email at [claims@zafco.com](mailto:claims@zafco.com) with the subject 'Claim Adjustment Form Request'. Each claim must be supported by three (3) medium resolution pictures per tire of the following:

1. Serial and DOT number, labeled as 1-1.
2. Claim condition, labeled as 1-2.
3. Complete tire with the tread portion clearly visible, named 1-3; and so forth.

The completed 'Claim Adjustment Form', together with the pictures, must be emailed to [claims@zafco.com](mailto:claims@zafco.com). The DOT and serial number cut-outs of adjusted claims must be mailed to us at the following address:

Zafco International LLC  
Attn: Armstrong Tires Technical Department  
Countyline Corporate Park  
4220 W 104th Street, Suite 11  
Hialeah, FL 33018

All claims will be settled within thirty (30) working days upon receipt of full details using the instructions stated above.

## LEGAL RIGHTS

This warranty gives you specific legal rights and you may also have other rights that vary from state to state.

DISCLAIMER: THIS WARRANTY IS IN LIEU OF, AND ARMSTRONG TIRES HEREBY DISCLAIMS, ANY AND ALL OTHER WARRANTIES AND REPRESENTATIONS, EXPRESS OR IMPLIED, AND NO OTHER WARRANTY OR REPRESENTATION OF ANY KIND IS MADE BY ARMSTRONG TIRES OR SHALL BE IMPLIED BY LAW.

## SAFETY WARNING

At Armstrong Tires, we make your safety our top priority. It is essential for you to ensure proper use and maintenance of your tires to avoid any serious injury. Here are some safety tips we recommend to mitigate your risk of tire failure:

1. Tires should be regularly inspected by a qualified tire professional for any signs of damage.
2. Proper recapping procedures should be followed. The correct pull point for recapping is essential for prolonged tire life without jeopardizing casing damage and retreadability. We strongly recommend 4/32" to 6/32" as the pull point for proper recapping.
3. Tires should be mounted only by trained professionals. Follow all instructions in the vehicle owner's manual or tire placard in vehicle to avoid under-inflation, overloading and misapplication.
4. Use approved rims and wheels only.
5. We recommend replacing any tires that are beyond ten (10) years from their date of manufacture. If your vehicle manufacturer has specific recommendations for tire replacement, you should follow the specific recommendations for that vehicle.
6. Always avoid purchasing used tires. Previous usage may have damaged internal components that may lead to tire failure.
7. We recommend routine air pressure checks as per your vehicle manufacturer's specifications.

Any tire, no matter how well constructed, may fail in use as a result of damage or misuse. If you experience any vibrations or ride disturbances, or notice a bulge, bump, or any kind of irregularities, we recommend having your tires evaluated by a qualified tire servicer immediately.









[ARMSTRONGTIRE.COM](http://ARMSTRONGTIRE.COM)

**Zafco International LLC**  
Countyline Corporate Park  
4220 W 104th Street, Suite 11  
Hialeah, FL 33018

